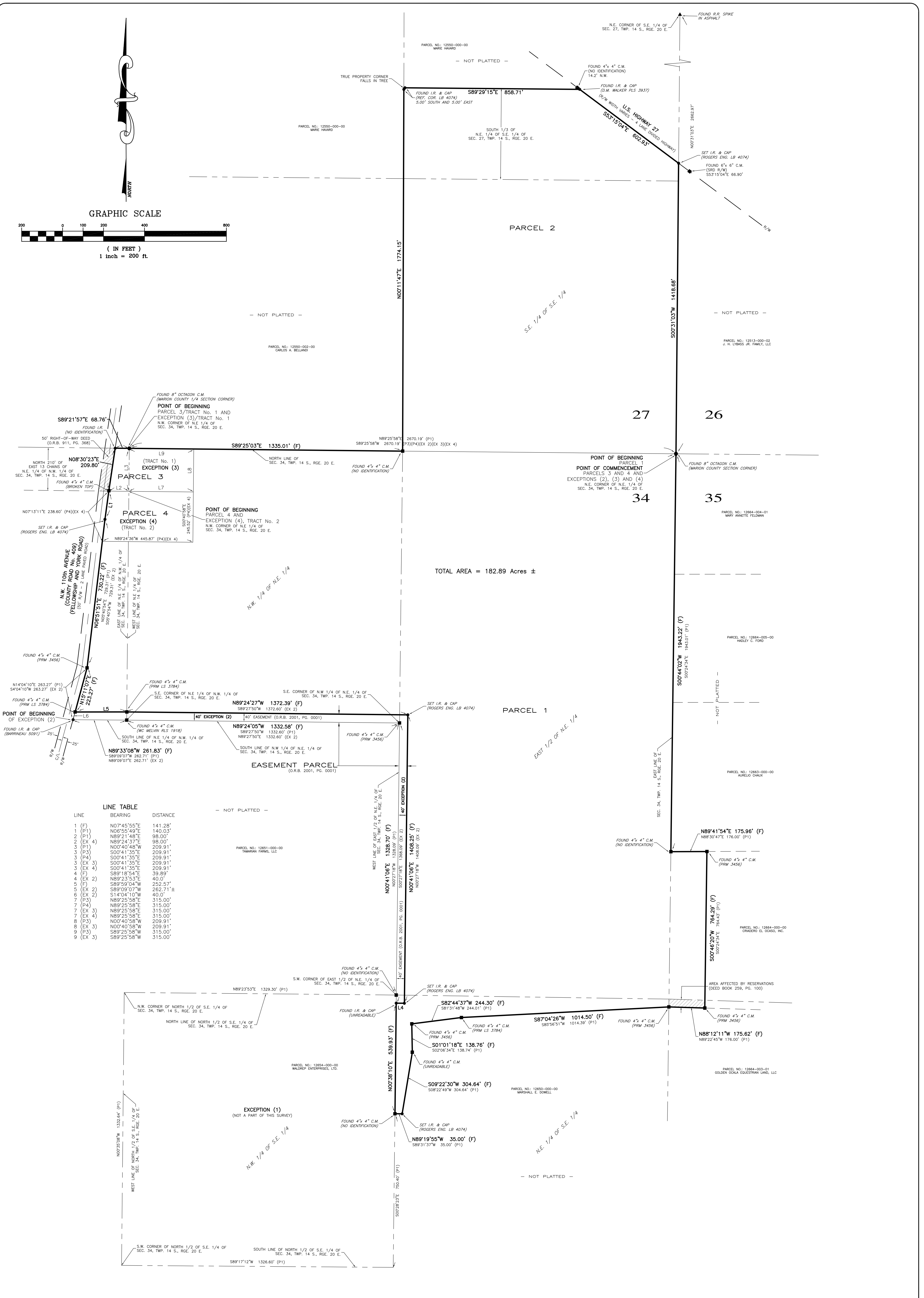
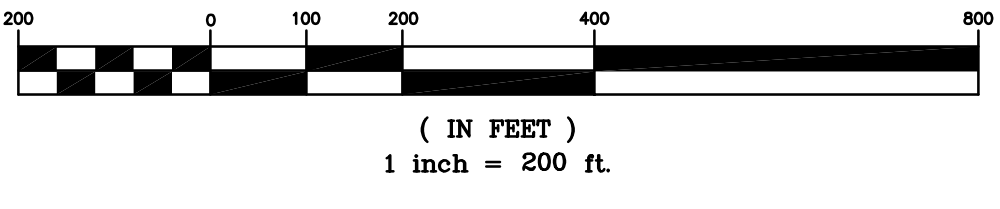




GRAPHIC SCALE



LINE TABLE

LINE	BEARING	DISTANCE
1 (F)	N07°45'55\"	141.28'
1 (P1)	N06°55'49\"	140.03'
1 (P1)	N89°21'48\"	98.00'
2 (EX 4)	N89°24'37\"	98.00'
2 (P1)	N00°40'48\"	209.91'
2 (P3)	S00°41'35\"	209.91'
2 (P4)	S00°41'35\"	209.91'
2 (EX 3)	S00°41'35\"	209.91'
2 (EX 4)	S00°41'35\"	209.91'
2 (EX 2)	N89°18'54\"	39.89'
2 (EX 2)	N89°23'51\"	40.0'
2 (EX 2)	S89°59'04\"	252.57'
2 (EX 2)	S89°09'07\"	262.71'±
2 (EX 2)	S14°04'10\"	40.0'
2 (P3)	N89°25'58\"	315.00'
2 (P4)	N89°25'58\"	315.00'
2 (EX 3)	N89°25'58\"	315.00'
2 (EX 4)	N89°25'58\"	315.00'
2 (P3)	N00°40'58\"	209.91'
2 (EX 3)	N00°40'58\"	209.91'
2 (P3)	S89°25'58\"	315.00'
2 (EX 3)	S89°25'58\"	315.00'

TOTAL AREA = 182.89 Acres ±

2 OF 4 SHEETS
1\"/>

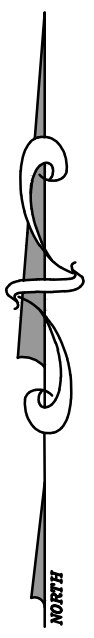
ALTA/NSPS LAND TITLE SURVEY
FOR
GOLDEN OCALA EQUESTRIAN LAND, L.L.C.
BOUNDARY MAP

ROGERS ENGINEERING, LLC
Civil Engineering & Land Surveying

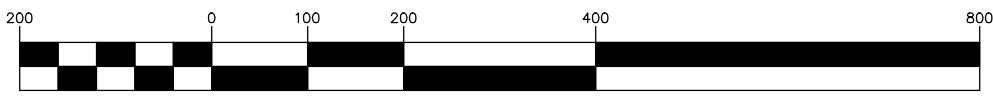
1105 S.E. 3rd Avenue • Ocala, Florida 34471 • Ph. (352) 622-9214 • Lic. Bus. #4074

Robert L. Rogers, PE
Fl. Reg. No. 10027
rrogers@rogerseng.com
Rodney K. Rogers, PSM
Fl. Reg. No. 5274
rkrogers@rogerseng.com

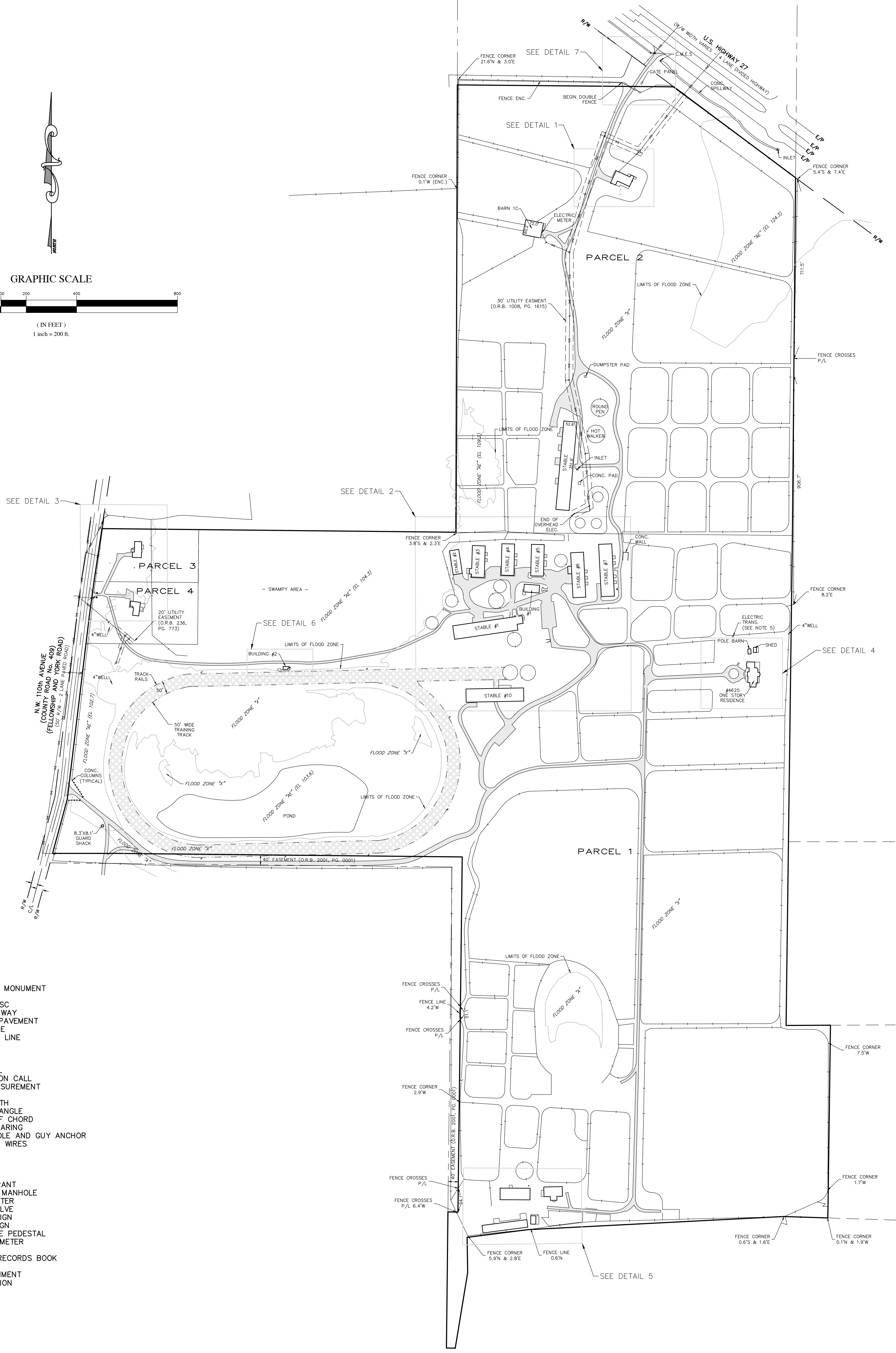
DATE	REVISION



GRAPHIC SCALE



(IN FEET)
1 inch = 200 ft.



- LEGEND**
- C.M. CONCRETE MONUMENT
 - I.R. IRON ROD
 - N&D NAIL & DISC
 - R/W RIGHT OF WAY
 - E/P EDGE OF PAVEMENT
 - C/L CENTERLINE
 - P/L PROPERTY LINE
 - SEC. SECTION
 - TWP. TOWNSHIP
 - RGE. RANGE
 - (P) PLAT CALL
 - (D) DESCRIPTION CALL
 - (F) FIELD MEASUREMENT
 - R RADIUS
 - L ARC LENGTH
 - D or Δ CENTRAL ANGLE
 - LC LENGTH OF CHORD
 - CB CHORD BEARING
 - UTILITY POLE AND GUY ANCHOR
 - OVERHEAD WIRES
 - CONC. CONCRETE
 - CONC. CONCRETE
 - ASPH. ASPHALT
 - FIRE HYDRANT
 - SANITARY MANHOLE
 - ⊕ WATER METER
 - ⊕ WATER VALVE
 - ⊕ TRAFFIC SIGN
 - ⊕ STREET SIGN
 - ⊕ TELEPHONE PEDESTAL
 - ⊕ ELECTRIC METER
 - ⊕ MAILBOX
 - O.R.B. OFFICIAL RECORDS BOOK
 - P.C. PAGE
 - ENC. ENCROACHMENT
 - INT. INTERSECTION

3 OF 4
SHEET 4

ALTA/NSPS LAND TITLE SURVEY
FOR
GOLDEN OCALA EQUESTRIAN LAND, L.L.C.
IMPROVEMENT LOCATIONS

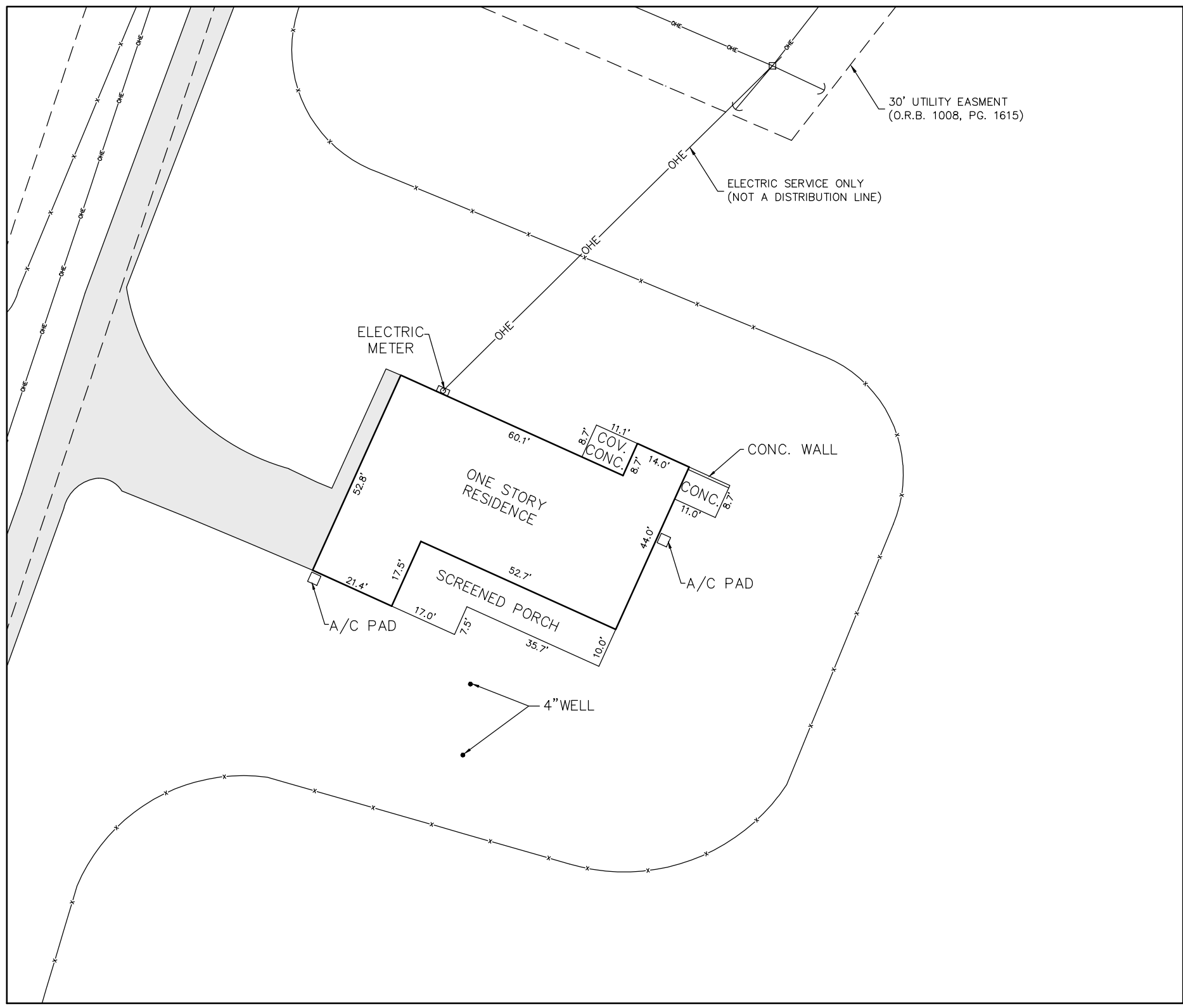
ROGERS ENGINEERING, LLC
Civil Engineering & Land Surveying

1105 S.E. 3rd Avenue • Ocala, Florida 34471 • Ph. (352) 622-9214 • Lic. Bus. #4074

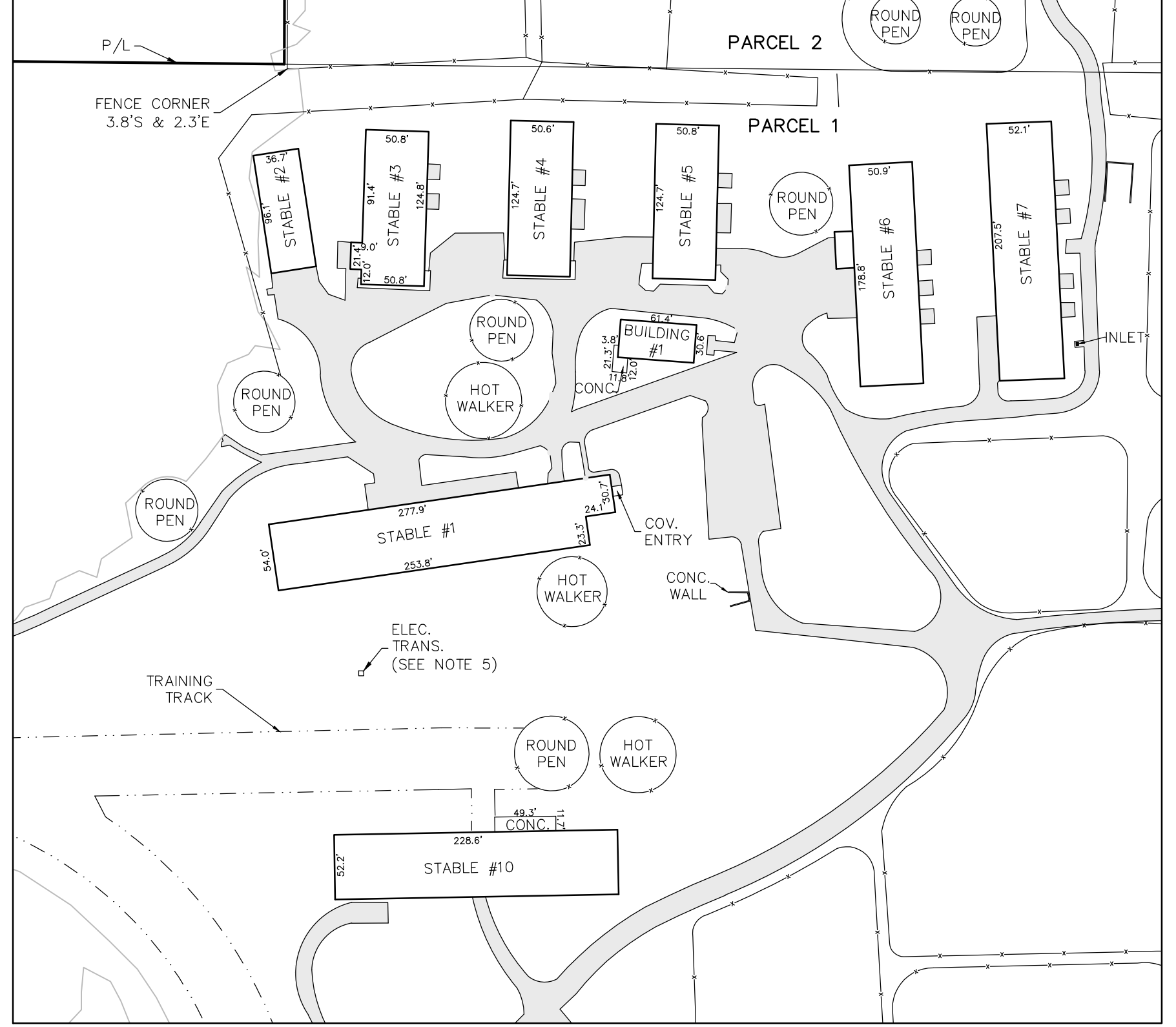
Robert L. Rogers, PE
Fl. Reg. No. 10027
rrogers@rogerseng.com

Rodney K. Rogers, PSM
Fl. Reg. No. 5274
rkrogers@rogerseng.com

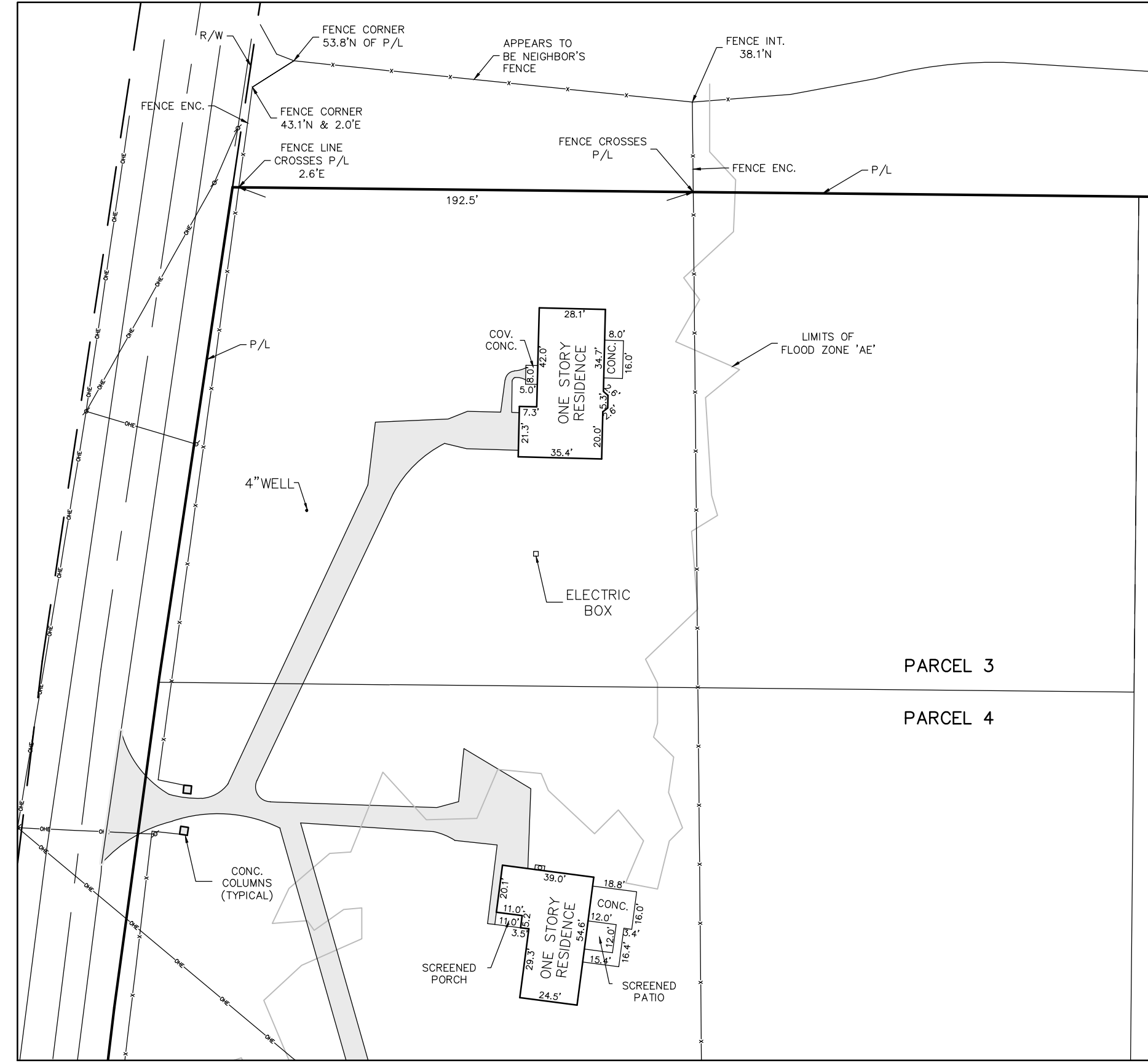
DATE	REVISION



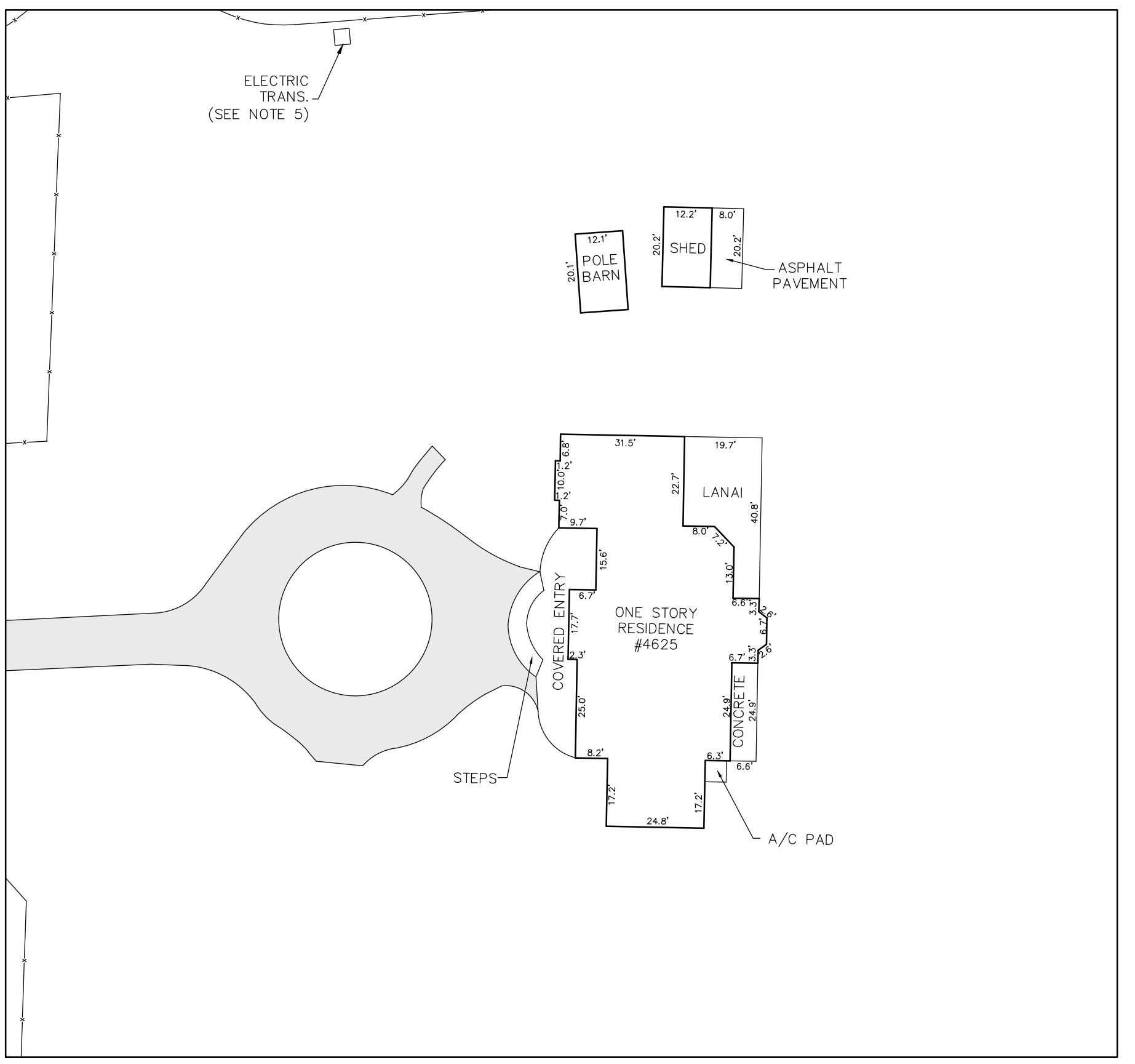
DETAIL 1
SCALE: 1"=30'



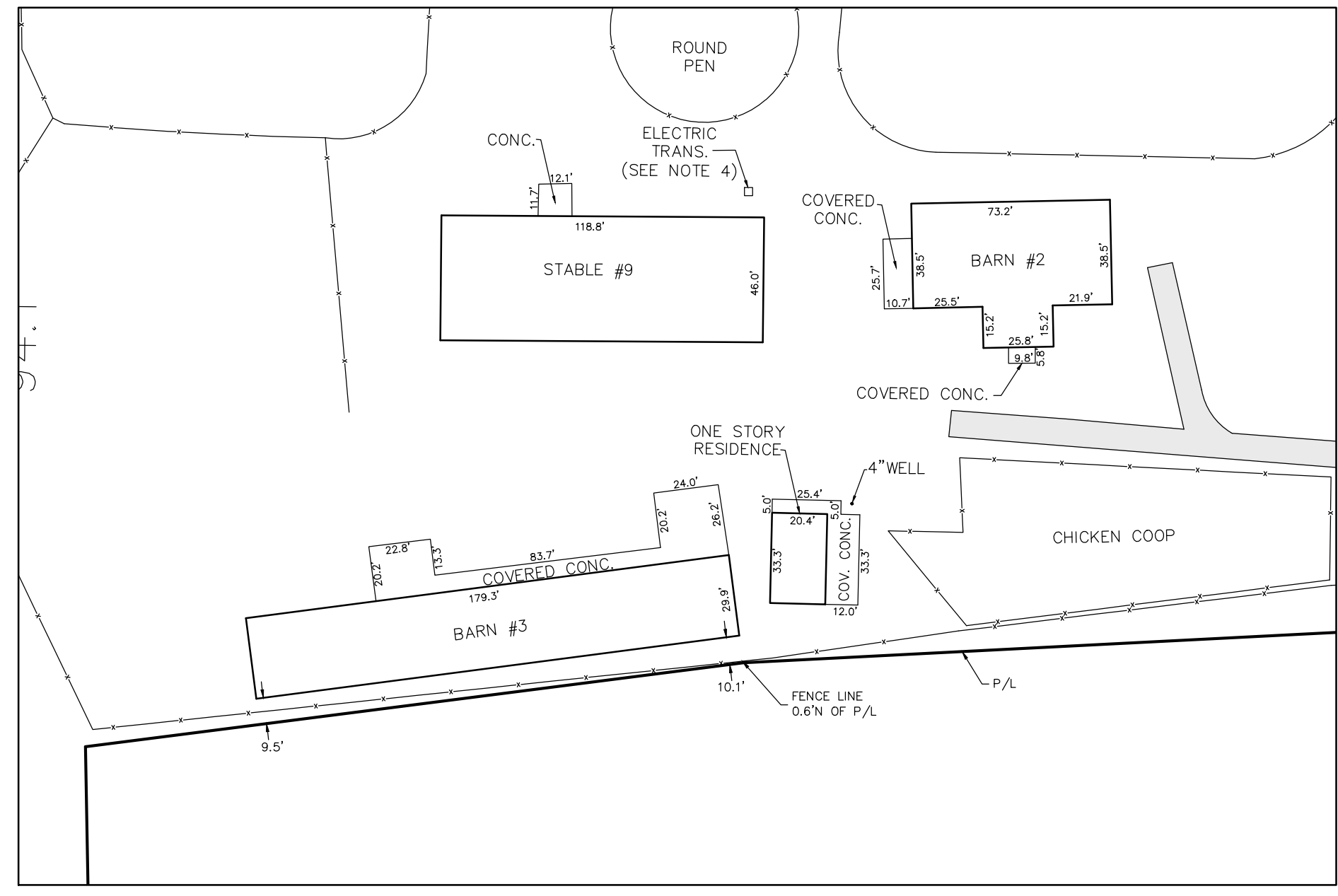
DETAIL 2
SCALE: 1"=100'



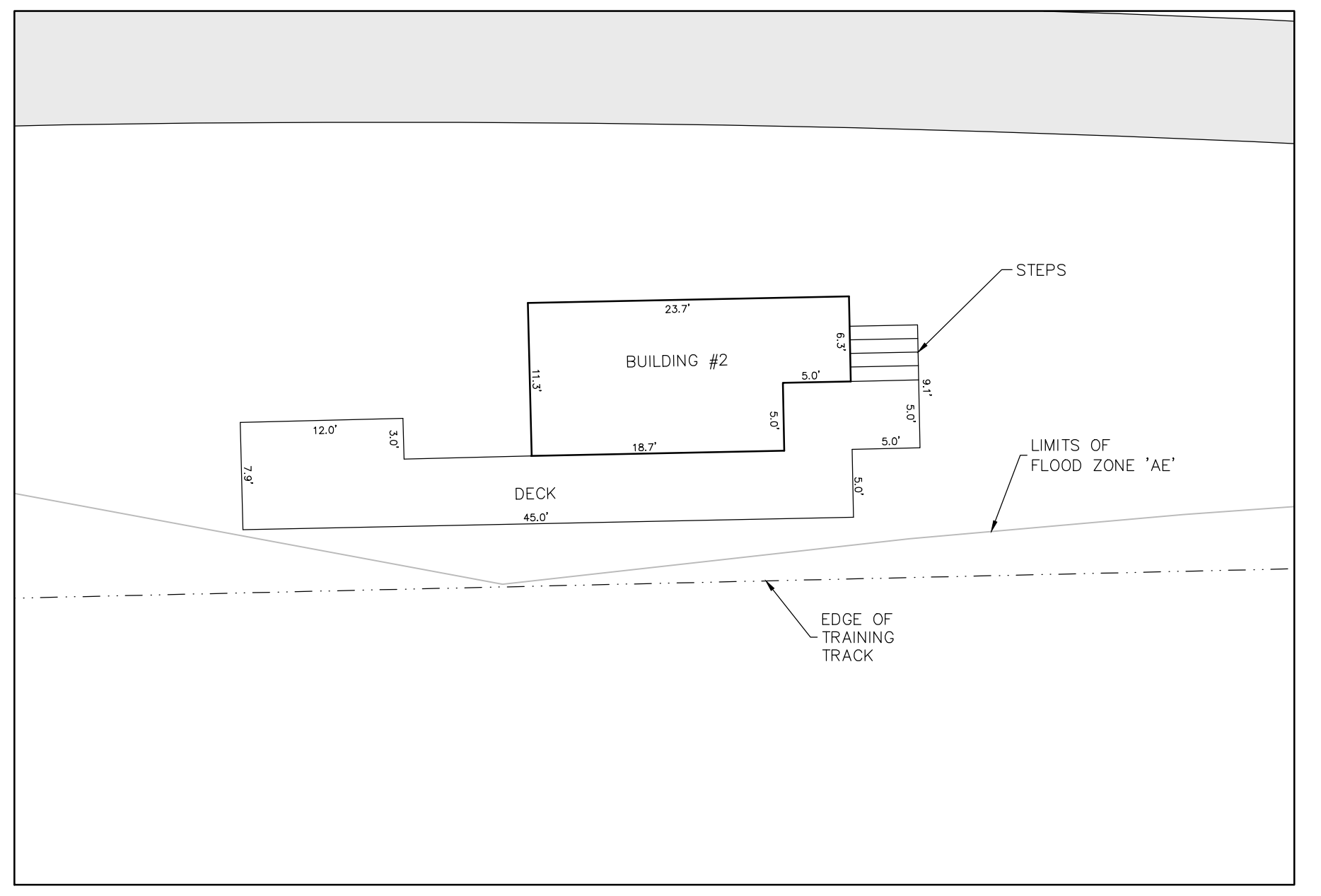
DETAIL 3
SCALE: 1"=50'



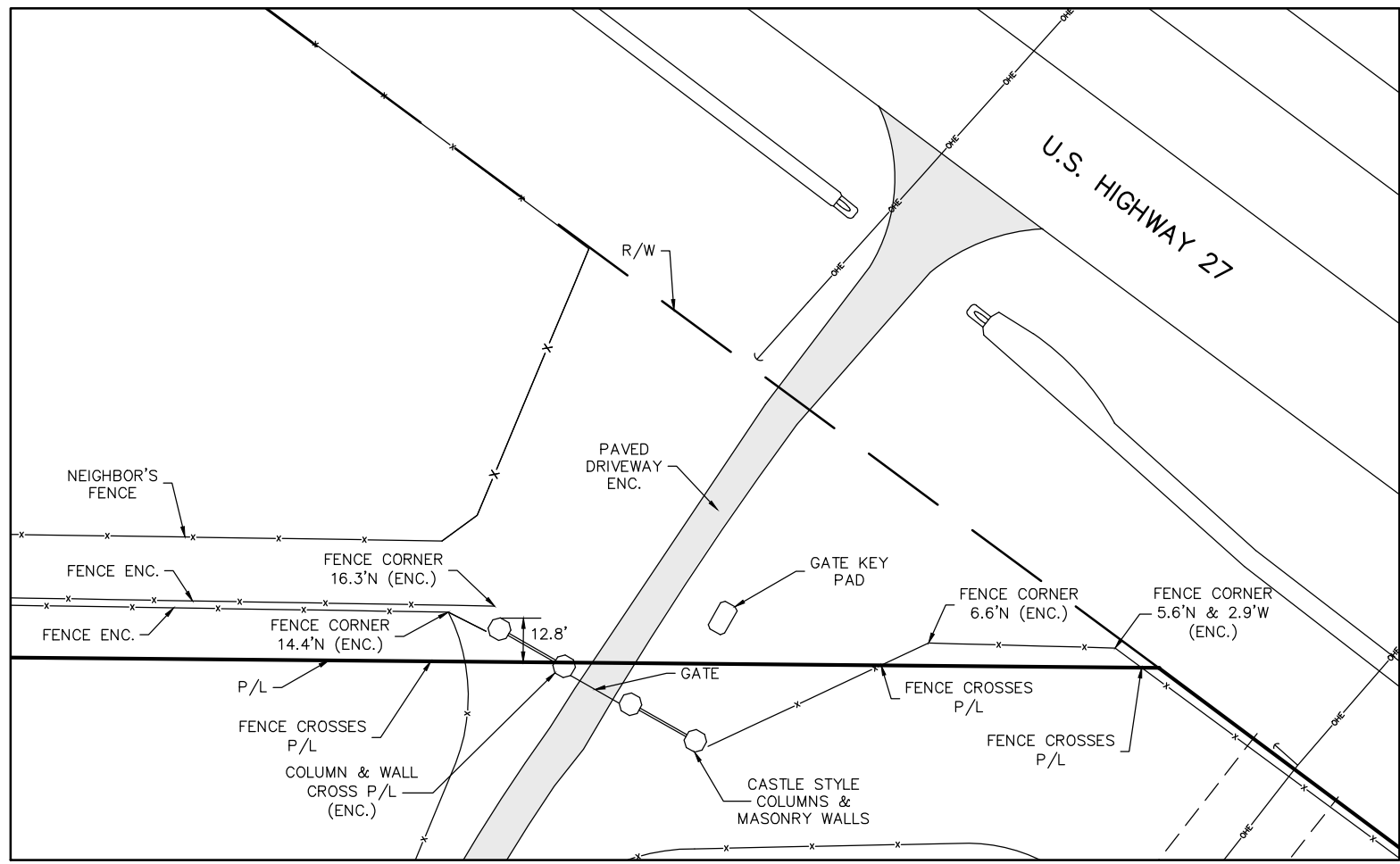
DETAIL 4
SCALE: 1"=30'



DETAIL 5
SCALE: 1"=50'



DETAIL 6
SCALE: 1"=10'



DETAIL 7
SCALE: 1"=50'

SHEET
4 OF 4

ALTA/NSPS LAND TITLE SURVEY
FOR
GOLDEN Ocala EQUESTRIAN LAND, L.L.C.
IMPROVEMENT DETAILS

ROGERS ENGINEERING, LLC
Civil Engineering & Land Surveying

1105 S.E. 3rd Avenue • Ocala, Florida 34471 • Ph. (352) 622-9214 • Lic. Bus. #4074

Robert L. Rogers, PE
Fl. Reg. No. 10027
rrogers@rogerseng.com

Rodney K. Rogers, PSM
Fl. Reg. No. 5274
rkrogers@rogerseng.com

DATE	REVISION