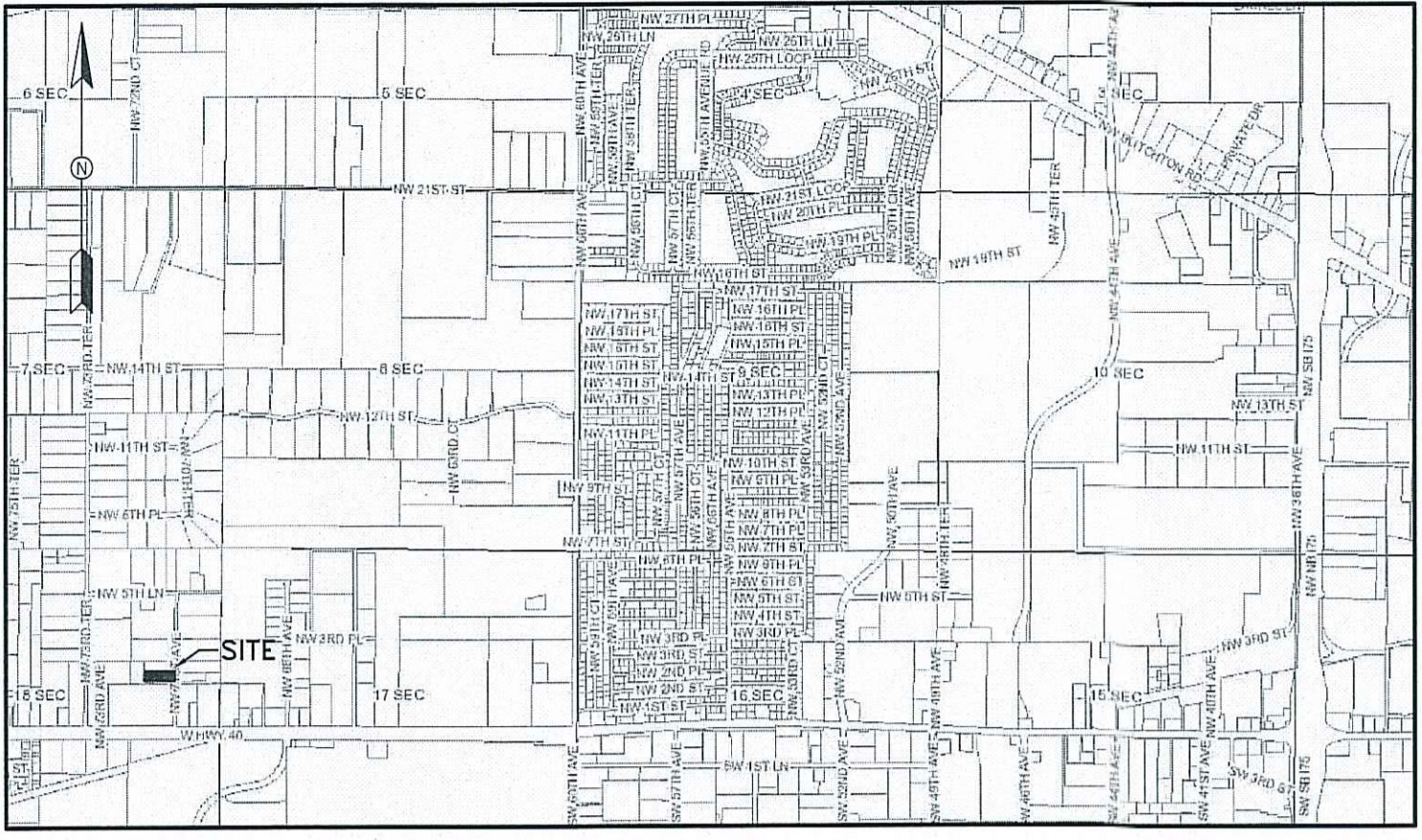


"VICINITY MAP" (NOT TO SCALE)



SURVEYOR'S NOTES:

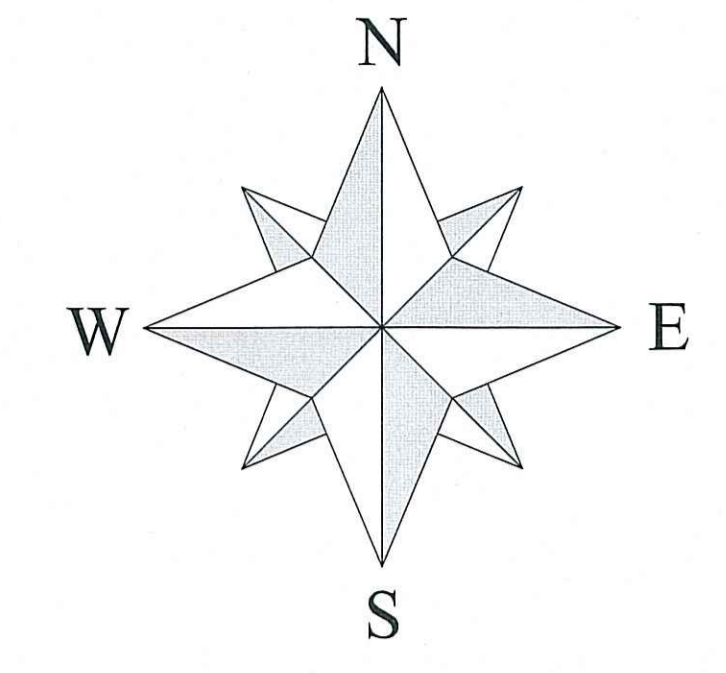
- 1. THE FIELD MEASURED BEARINGS DEPICTED HEREON ARE BASED ON FLORIDA WEST ZONE NAD-83, (1990 ADJUSTMENT)...

DESCRIPTION:

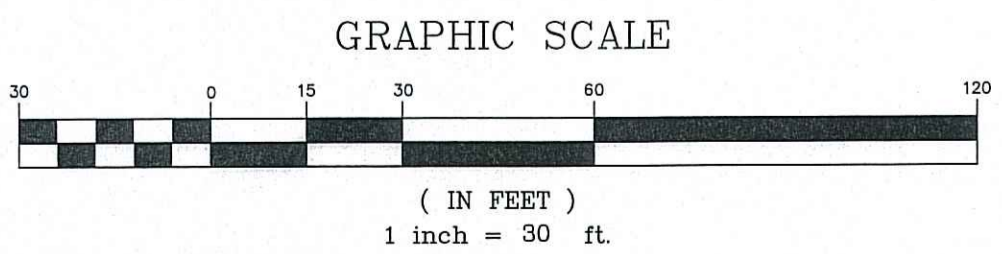
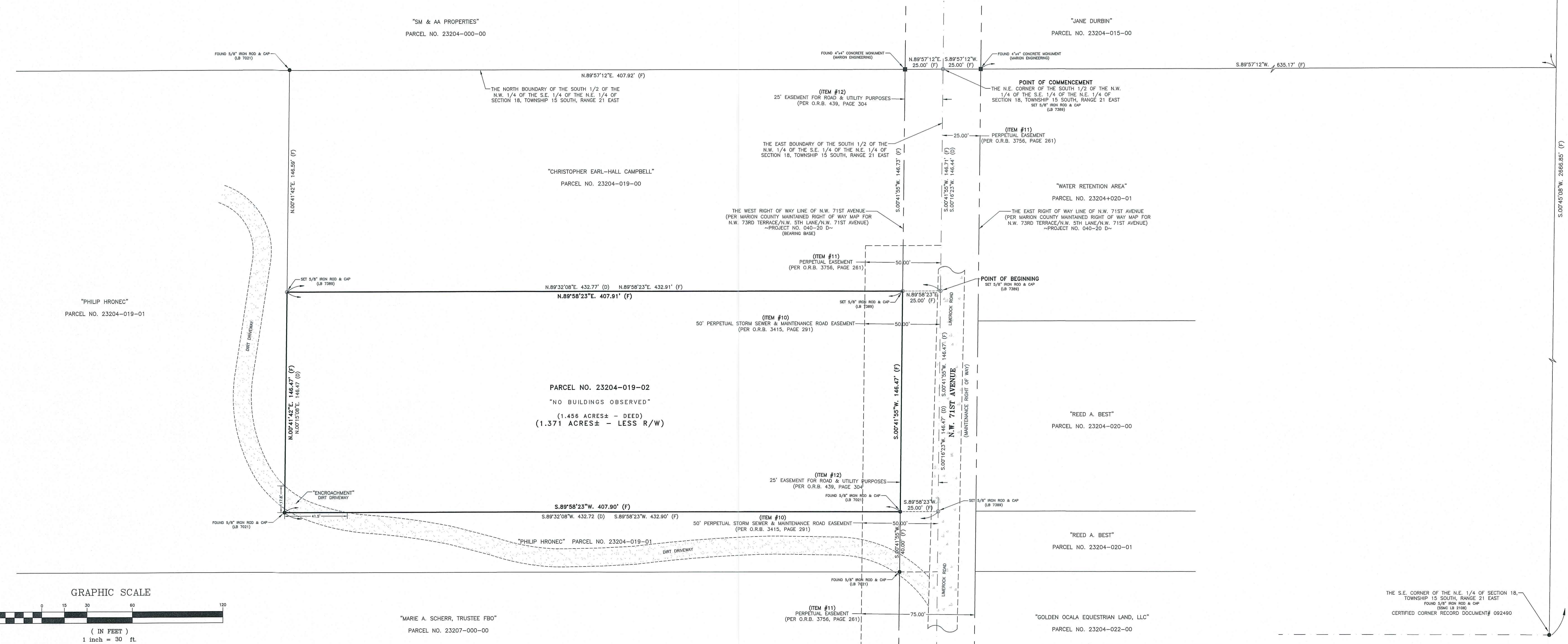
(PER TITLE COMMITMENT PREPARED BY FIRST AMERICAN TITLE INSURANCE COMPANY, FILE NO.: 2076-5142220, DATED JANUARY 5, 2021)

SCHEDULE B-II EXCEPTIONS:

- ITEMS 1-8 ARE NOT SURVEY RELATED. ITEM 9: EASEMENT RECORDED IN BOOK 304, PAGE 659 AFFECTS SUBJECT LANDS...



THE N.E. CORNER OF THE N.E. 1/4 OF SECTION 18, TOWNSHIP 15 SOUTH, RANGE 21 EAST...



Legend table with symbols for various survey features like wells, manholes, and monuments.

Legend table with symbols for various survey features like hose bibbs, cable markers, and traps.



"ALT/NSPS LAND TITLE SURVEY" FOR: GOLDEN OCALA EQUESTRIAN LAND, L.L.C.

Logo for Preece Land Surveying, Inc. and contact information for Bellwether Professional Park.

SURVEYOR'S CERTIFICATION: THIS IS TO CERTIFY THAT THIS MAP OR PLAT AND THE SURVEY ON WHICH IT IS BASED...

Table with columns for DATE OF FIELD SURVEY, DRAWN, CHECKED, F.B., PAGES, FILE INFO, SCALE, and COPYRIGHT.